

eAccepta is a software package to automate the intake of orders with the corresponding article drawings which are received by email.

For each received order the drawings will be converted to the configured file format, eventually printed and stored in the configured directory structure. At the same time, all relevant data (such as order lines) is set available for your ERP system in a readable format.

Besides orders, also quotations can be processed automatically.

Please see our eAccepta leaflet for a more general description.

Your benefit

eAccepta offers several benefits:


- Structured storage of order and drawing information
- Helps to structure the order and drawing information flow
- Quality improvement by automatic processing
- Labor savings

eAccepta software

On the following pages there is a general software description of:


1. Email overview screen
2. Email processing screen
3. File locations
4. ERP export file


1: Email overview screen

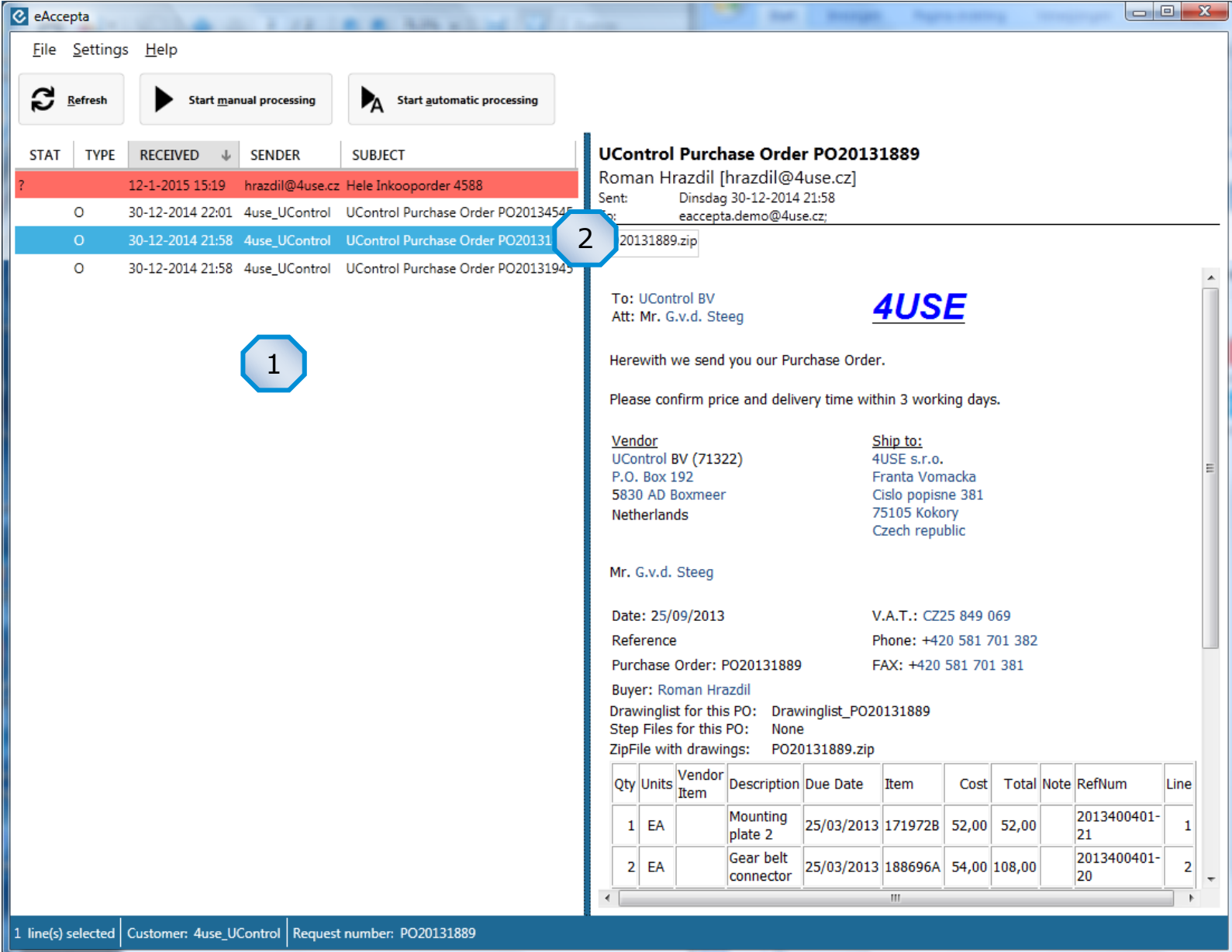
Screen after startup, showing directly all new emails **1** in the panel at the left. Click on  to update email list.

Emails with a red background are not yet configured for automatic processing.

Clicking on an email line **2** will show the email content in the panel at the right.

Click on  to start processing of the selected email (see: 2. Email processing screen).

Click on  to start automatic processing of the selected emails. Progress bar will be shown during processing.



UControl Purchase Order PO20131889
Roman Hrazdil [hrazdil@4use.cz]
Sent: Dinsdag 30-12-2014 21:58
To: eaccepta.demo@4use.cz;

To: UControl BV
Att: Mr. G.v.d. Steeg

4USE

Herewith we send you our Purchase Order.

Please confirm price and delivery time within 3 working days.

Vendor
UControl BV (71322)
P.O. Box 192
5830 AD Boxmeer
Netherlands

Ship to:
4USE s.r.o.
Franta Vomacka
Cislo popisne 381
75105 Kokory
Czech republic

Mr. G.v.d. Steeg

Date: 25/09/2013 V.A.T.: CZ25 849 069
Reference Phone: +420 581 701 382
Purchase Order: PO20131889 FAX: +420 581 701 381
Buyer: Roman Hrazdil
Drawinglist for this PO: Drawinglist_PO20131889
Step Files for this PO: None
ZipFile with drawings: PO20131889.zip

Qty	Units	Vendor Item	Description	Due Date	Item	Cost	Total	Note	RefNum	Line
1	EA		Mounting plate 2	25/03/2013	171972B	52,00	52,00		2013400401-21	1
2	EA		Gear belt connector	25/03/2013	188696A	54,00	108,00		2013400401-20	2

1 line(s) selected | Customer: 4use_UControl | Request number: PO20131889






2: Email processing window

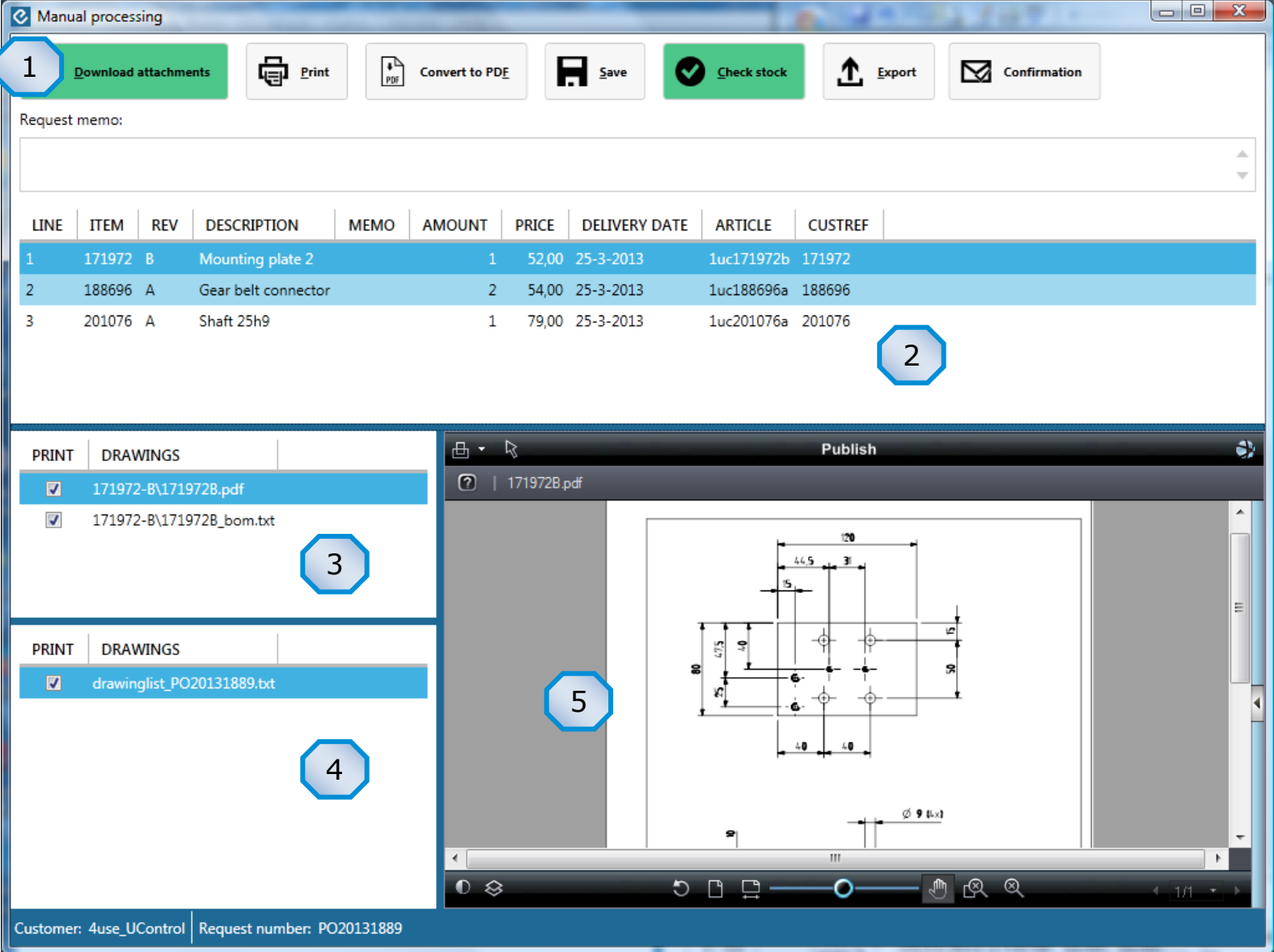
Window showing the data after clicking on **1**.

Panel:

- 2** shows all extracted order lines. Each field can be modified.
- 3** shows all documents belonging to the selected order line.
- 4** shows all documents that cannot be assigned to an order line.
- 5** shows the in **3** or **4** selected document.

Click on:

-  to print all assigned drawings.
-  to convert all drawings to the configured format.
-  to store all files in the configured directory.
-  to export all order data for the ERP system.
-  to sent a confirmation email.



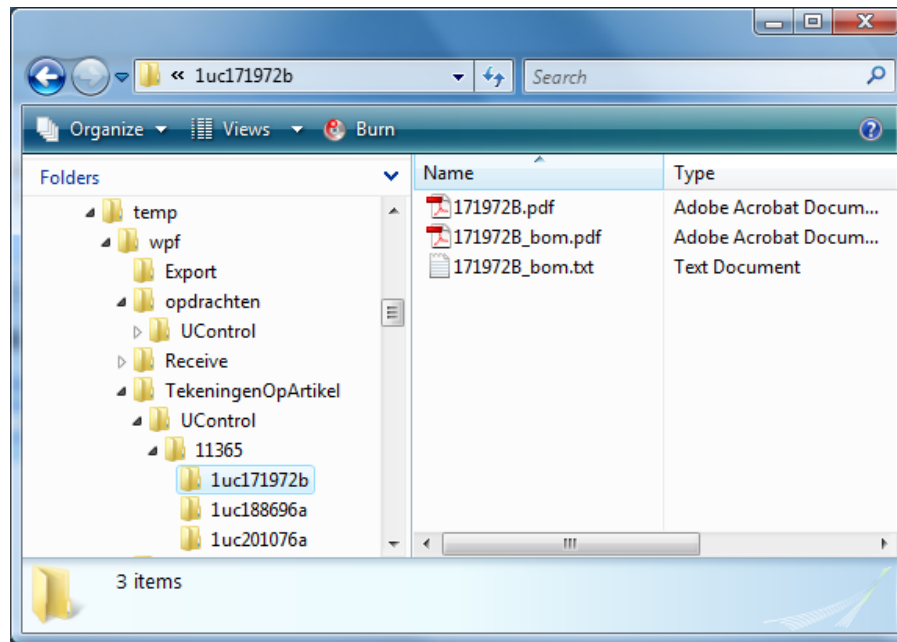
The screenshot shows the 'Manual processing' window with the following components:

- Toolbar:** Includes buttons for 'Download attachments' (1), 'Print', 'Convert to PDF', 'Save', 'Check stock', 'Export', and 'Confirmation'.
- Request memo:** A text area for entering a request memo.
- Table:** A table with columns: LINE, ITEM, REV, DESCRIPTION, MEMO, AMOUNT, PRICE, DELIVERY DATE, ARTICLE, CUSTREF. It contains three rows of order data.
- Document Lists:** Two panels under 'PRINT DRAWINGS' showing document lists for selected order lines (3) and unassigned documents (4).
- Drawing Viewer:** A 'Publish' window showing a technical drawing of a mounting plate (5).
- Footer:** Customer: 4use_UControl | Request number: PO20131889

LINE	ITEM	REV	DESCRIPTION	MEMO	AMOUNT	PRICE	DELIVERY DATE	ARTICLE	CUSTREF
1	171972	B	Mounting plate 2		1	52,00	25-3-2013	1uc171972b	171972
2	188696	A	Gear belt connector		2	54,00	25-3-2013	1uc188696a	188696
3	201076	A	Shaft 25h9		1	79,00	25-3-2013	1uc201076a	201076

3: File locations

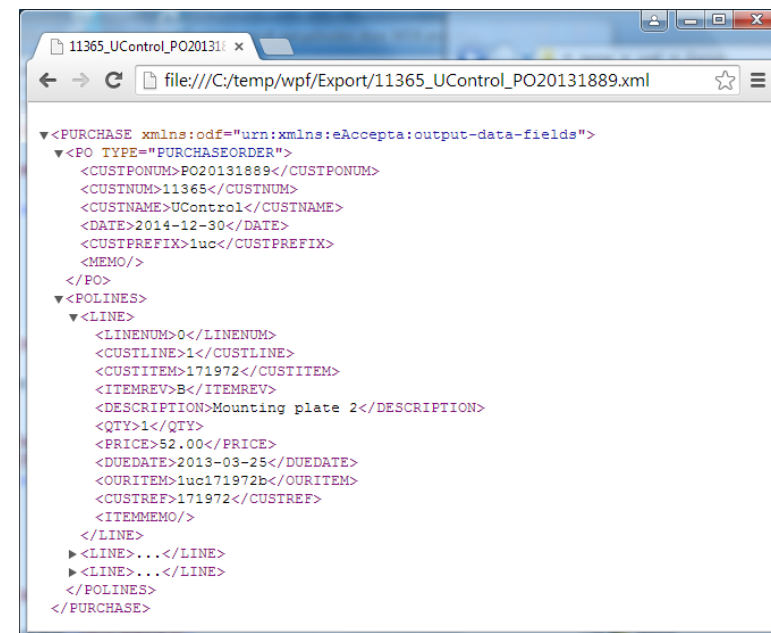
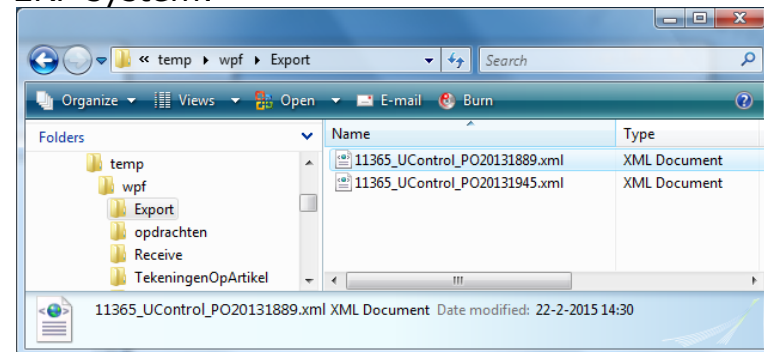
Per processed order, documents (converted drawings) are stored in the configured folder:



The original email with attached documents are stored in a different configured folder for audit purposes (reference).

4: ERP export file

Per processed order an export file is created and placed in the configured folder for processing by your ERP system:



Supported file formats are .xml and .csv